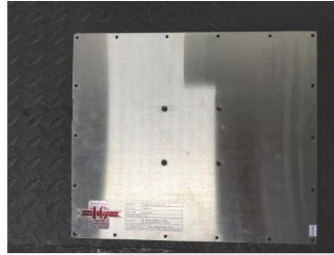


How to replace an LCD Panel

Step 1

The first step is to take the back panel off the monitor casing.

On the back of the monitor will be screws holding the back panel to the casing, unscrew these and then take the panel off to expose the internal parts of the monitor.



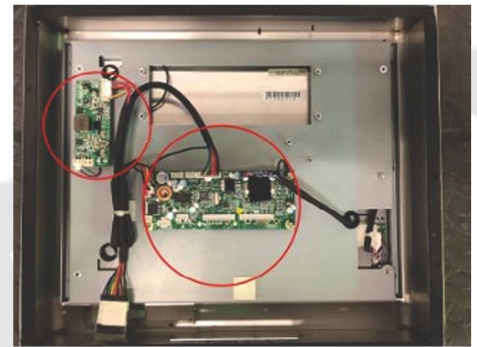
Step 2

After taking off the back panel, you should see something similar to the image on the right.

The next step is to remove all of the other parts to be able to get to the LCD panel itself.

You will see the AD Board, Inverter and PSU (Power Supply Unit)

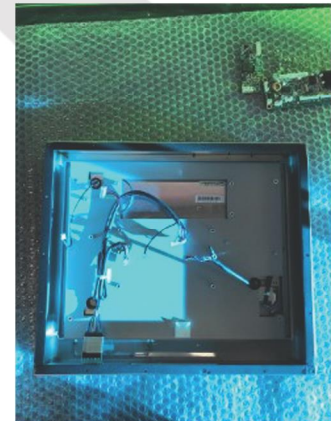
You'll then need to remove all the parts before removing the LCD panel.



Step 3

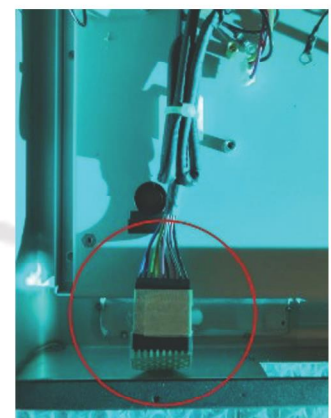
After removing all of the parts, you should see something similar to the image of the right, with the LCD panel in the monitor casing and cables to go into the other parts from the LCD monitor.

You can now start to remove the LCD panel from the monitor casing.



Step 4

To start removing the LCD panel from the monitor casing, first detach the cables from the OSD buttons to the LCD panel.

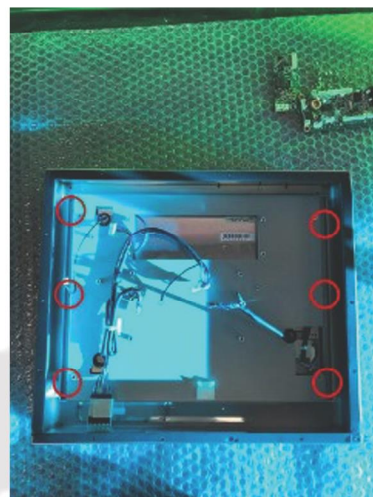


How to replace an LCD Panel

Step 5

After disconnecting all of the cables from the LCD panel, the next step is to unscrew the panel from the monitor casing.

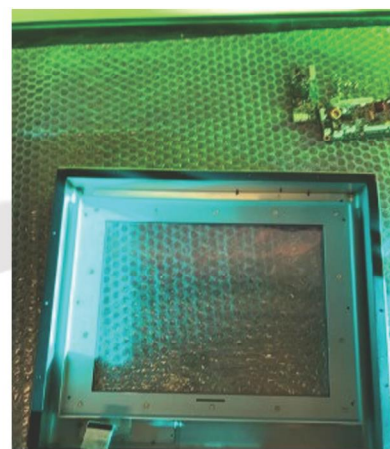
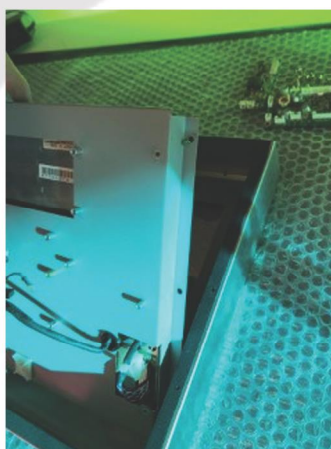
In this case, there are 6 screws attaching it to the casing.



Step 6

After everything has been disconnected, you should be able to lift your LCD panel out of the monitor ready to be replaced.

Be careful when handling the LCD panel, because it's very delicate and finger prints will mark the internal screen.



If you require further assistance, please don't hesitate to call one of our team, who will be happy to help!

Call us on: 01782 567 979
Email us at: support@flatvision.co.uk