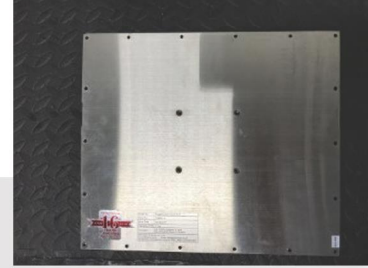


# How to change an AD Board

## Step 1

The first step is to take the back panel off the monitor casing.

On the back of the monitor will be screws holding the back panel to the casing, un-screw these and then take the panel off to expose the internal parts of the monitor.

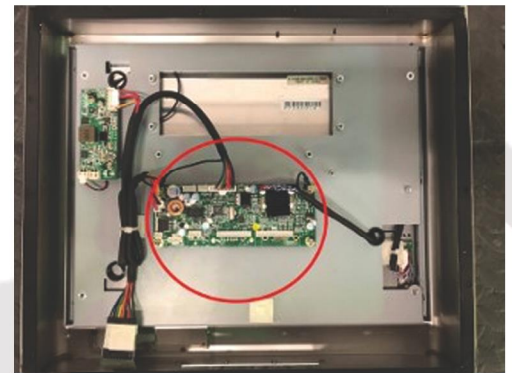


## Step 2

After taking off the back panel, you should see something like the image on the right.

The next step is to know what parts are what - all AD boards are different, but it should look similar to the AD board circled in red.

The AD board is usually the biggest board in a monitor.

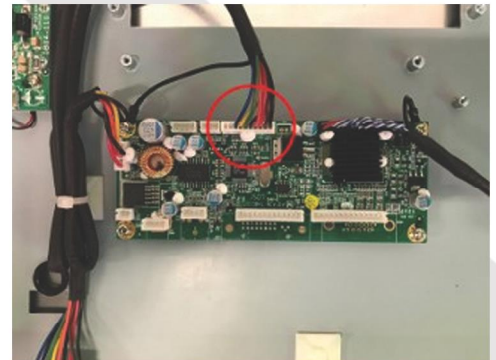


## Step 3

After identifying the AD board, you can then start to take it out of the monitor.

The first thing to do is disconnect all of the wires from the AD board. Be careful when doing this that you don't pull on the cable and damage the connector.

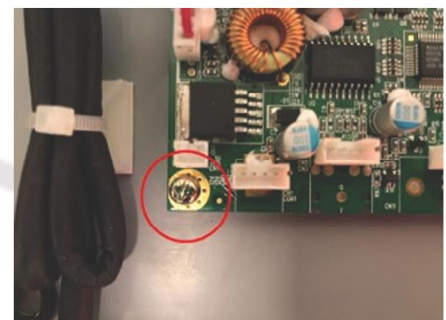
Please ensure not to disconnect the connector, as it may not work when powering on.



## Step 4

After disconnecting all of the wires from the AD board, you can remove it by un-screwing the screws holding it in place by the four corners of the AD.

There's a picture of this on the right for reference.



# How to change an AD Board

## Step 5

You should now be able to take the AD board off the monitor, seeing something similar to what is on the right.



## Step 6

After removing the old AD board, you can now start to put the replacement AD board into the monitor.

To do this, simply repeat what you have just done but in reverse - please ensure that you connect the right connectors to the AD board.



**If you require further assistance, please don't hesitate to call one of our team who will be happy to help!**

**Call us on: 01782 567 979**  
**Email us at: [support@flatvision.co.uk](mailto:support@flatvision.co.uk)**